

---

**ASIATIC LILY FLOWER AS A SOURCE OF PARTY CLOTHING  
CREATION IDEAS**

**Laylisa Salsabillah<sup>1</sup>, Yulistiana<sup>2</sup>**

<sup>1,2</sup>Universitas Negeri Surabaya

E-mail: laylisa.20007@mhs.unesa.ac.id

**ARTICLE INFO**

**Article History**

Received:  
22 July 2024;  
Revised:  
27 August 2024;  
Accepted:  
20 September 2024  
Available online:  
1 October 2024.

**Keywords**

Asiatic lily flowers,  
party wear, cording

**ABSTRACT**

This research is motivated by the need in the fashion industry for innovation and creativity in fashion design, especially in party wear which emphasizes aspects of beauty and luxury. The Asiatic lily flower has a unique beauty, its bright colors, large and curved petals are very eye-catching, and have the potential to be an inspiration in developing manipulating fabric details. The purpose of writing this article is to describe the process of making and finished party clothing using the Asiatic Lily flower idea as a detail of manipulating fabric. The method used is the double diamond model, which consists of 4 stages, namely the discover stage by searching, finding and collecting information to be used as a source of ideas. The define stage is defining the information that has been obtained at the discover stage, then expressed in the form of a moodboard. The develop stage, namely the design ideas that have been described through a moodboard, are realized in the form of fashion sketches, and are developed, tested, revised and refined. The deliver stage is analyzing and explaining the results of the finished fashion design from the source of the Asiatic lily flower idea. The resulting party attire is as expected. The application of manipulating asiatic lily flower fabric succeeded in beautifying the appearance. For further development, it is recommended that the fabric manipulation technique inspired by the Asiatic Lily flower be applied to various types of clothing, not just limited to party clothing, to see its potential in various fashion contexts.

**Citation (IEEE Style):** [1] Salsabillah, L. & Yulistiana. (2024). Asiatic Lily Flower As A Source Of Party Clothing Creation Ideas . Home Economics Journal, 8 (2), 111-125

**INTRODUCTION**

In the world of fashion, creativity and innovation are the keys to creating unique and attractive designs. The fashion industry is always developing rapidly, marked by changing trends and the demand to continue to present innovative and attractive designs. In an effort to create clothing that stands out, designers often look to sources for inspiration. Sources of ideas are very important in making clothes, sources of ideas are really needed for fashion designers to create new collections, sources of ideas can be found anywhere, anything can be used as a source of ideas in making clothes [1]. In creating a fashion work, a source of ideas is needed, this is important for creating maximum fashion works. Selecting the right source of creative ideas is then used as inspiration for making clothing,



by processing it in depth and exploring the designer's creativity because with this creativity it will be easier for the designer to process the source of ideas for the realization of clothing. Sources of creative ideas can be obtained from anywhere, such as natural inspiration, namely flowers.

The source of the idea taken was the asiatic lily flower (*lilium asiaticum*). This plant is a type of lily plant that comes from East Asia. Asiatic Lily Flower are one of the most important ornamental plants worldwide because of their excellent horticultural characteristics [2]. Asiatic lilies are admired for their beautiful colors, including red, orange, yellow, white and purple. These colors are also associated with positive mood and joy. The Asiatic Lily flower is not only visually attractive, but also has a strong symbolism of purity, luxury and elegance, which is very relevant to the characteristics of festive fashion. Incorporating elements of this flower into clothing through fabric manipulation techniques. Fabric manipulation is an amazing art that transforms a piece of fabric into a 3-dimensional material [3]. can give a new dimension to a design, create stunning visual effects, and add aesthetic value. However, even though the Asiatic Lily flower has great potential as a design inspiration, its use in the fashion industry, especially in detail manipulating fabric, has not been widely explored. Based on the background that has been explained, this research was conducted to explore how the Asiatic Lily flower can be translated into party clothing designs that are not only visually beautiful but also unique and elegant.

Party clothing is clothing worn at parties, which is made with beautiful details using high quality fabric [4]. The type of clothing that is grouped according to the occasion one of which is party dress. As it is known that the types of clothing are distinguished by time, activities carried out, occasions and places intended by the wearer [5]. Party fashion is a type of clothing that demands high beauty and uniqueness, so designers are challenged to continue to innovate in creating designs that are stunning and different from the others. However, finding a source of inspiration that can give an elegant, luxurious impression and remain relevant in fashion trends is a challenge in itself.

Making detailed manipulating fabric for Asiatic Lily flowers offers great potential as a source of ideas for creating party clothing because of the beauty of its shape and color. However, until now, exploration of how the aesthetic elements of the Asiatic Lily flower can be translated into fashion design, especially through fabric manipulation techniques, is still limited. This research departs from this problem, namely how to integrate inspiration from the Asiatic Lily flower into the process of creating party clothing through fabric manipulation techniques, as well as to what extent the final result of the clothing can meet the aesthetic standards expected from a party clothing.

The creation of women's party clothing using the idea source of the Asiatic Lily flower proposes the use of detailed manipulating fabric in the form of a three-dimensional Asiatic Lily flower which adapts the shape, texture and color of the Asiatic Lily flower into the party clothing design. This technique involves an innovative process to create details in the fabric that mimic the petals, curved shape and asymmetrical feel of the Asiatic Lily. In this way, the resulting clothing is unique and highly aesthetic, resembling the characteristics of the flower. Design development with the addition of manipulating fabric cording elements to provide additional dimension and texture aims to make the fabric more visually attractive. Asymmetry in the design can give a dynamic and unconventional impression, while cording can highlight the visual details of the garment, creating a more



artistic and luxurious impression. The purpose of writing this article is (1) to explore and identify how the visual elements of the Asiatic Lily flower, such as shape, color and texture, can be used as a source of ideas for creating innovative and aesthetic party clothing designs (2) to develop and apply fabric manipulation techniques that taking inspiration from the characteristics of the Asiatic Lily flower (3) describes the process of making and finished party clothing with the source of the idea of the Asiatic Lily flower as a detail of manipulating fabric.

## METHOD

The method used in this research uses the double diamond model method. This double diamond method was first introduced by the British Design Council, in the form of a holistic approach to design, a design process in four stages, namely discover, define, develop and deliver [6]. Based on the four stages of the double diamond method, it can be described as follows.

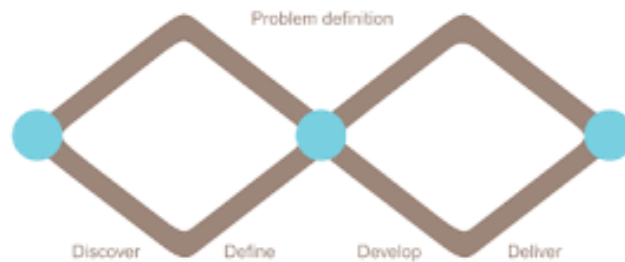


Figure 1. Double Diamond Model [7]

The discover stage is the stage of searching, finding and collecting information to be used as a source of ideas. The define stage is the stage of defining the information that has been obtained at the discover stage. The develop stage is the stage of developing and reviewing and then refining during the development stage including making a prototype. Finally, the deliver stage is the stage of delivering, collecting input, selecting a prototype, and finalizing the product.

### Discover

The discover stage is the stage of looking for sources of ideas, collecting various information and identifying needs in creating work. This stage aims to thoroughly understand the problem, discover aspects that still need to be seen, and understand the needs of the user [8]. At the beginning of the process, researchers looked for inspiration and collected information about the beauty of flora. Based on the research that has been carried out, researchers found a lot of information about flora. Of the many objects that can be used as a source of ideas, researchers chose the Asiatic lily flower to be used as a source of ideas for making party clothing. The Asiatic lily is a flower that has beauty in its petals which are wide open and curved. Having diverse and bright colors is often associated with a positive spirit and joy. The thought arose of taking the Asiatic lily flower as a source of ideas because the flower is unique, beautiful, and has bright colors, giving the impression of being bold and full of joy when realized in making party clothes.



## Define

The define stage is a combination of ideas and trying to understand everything that might be found during the discovery phase to create and determine a clear summary [9]. This stage is the stage of defining the information that has been obtained at the discover stage, then expressed in the form of a moodboard. Mood board is not the final result of design, but visual planning to give an illustration of how the final result will look like [10].



Figure 2. Moodboard

The moodboard used takes the theme from Fashion Trend Forecasting 2024/2025 Fashion Symbiotic. Applying the source of ideas from the Asiatic lily flower which was realized in making party clothing. Party wear is made for men and women. The target market is young men and women to adults from the upper middle social class. Men who like asymmetrical clothing shapes and unique details. Women who like feminine dramatic styles, like soft flowing materials, like floral motifs, like unique details, and like bright and bold colors. Creating a color design is also needed so that the color of the clothing that is created does not come out of the source of the idea. The color design taken from the Asiatic lily flower idea source is bright and bold colors such as yellow and blue.

## Develop

The develop stage is the embodiment of the design ideas that have been generated which will be turned into a work. The design ideas that have been described through the moodboard are realized in the form of fashion sketches, and are developed, tested, revised and refined. In this stage, the researcher creates a sketch design by considering the silhouette of the clothing, clothing details, and the fabric material that will be used.





Figure 3. Women's Party Clothing Sketch Design



Figure 4. Men's Party Clothing Sketch Design

In pictures 3 and 4 are some of the design sketches that have been made. From several designs that have been made, one design is selected which will later be realized. The selected design will be revised and refined again in the clothing details in the form of a stylization of the basic shape of the Asiatic lily flower.

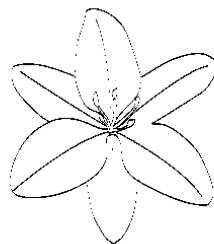


Figure 5. Asiatic Lily Flower



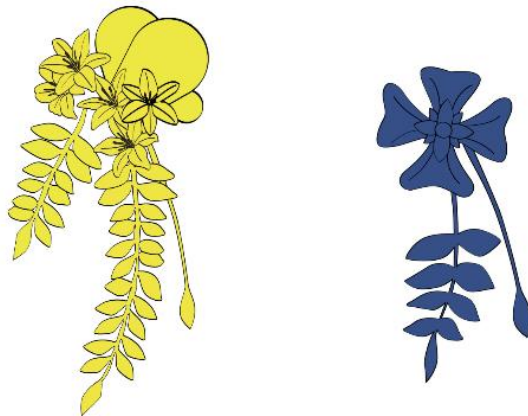


Figure 6. Stylized Results of Asiatic Lily Flowers

In figure 5 is a sketch design of the basic shape of the Asiatic lily flower that will be distilled. In picture 6 is the stylized result of the Asiatic lily flower. The distillation of Asiatic lily flower petals is then arranged by taking several Asiatic lily flowers plus the leaves arranged hanging down. The goal is to add aesthetic value to clothing.



Figure 7. Technical Drawing

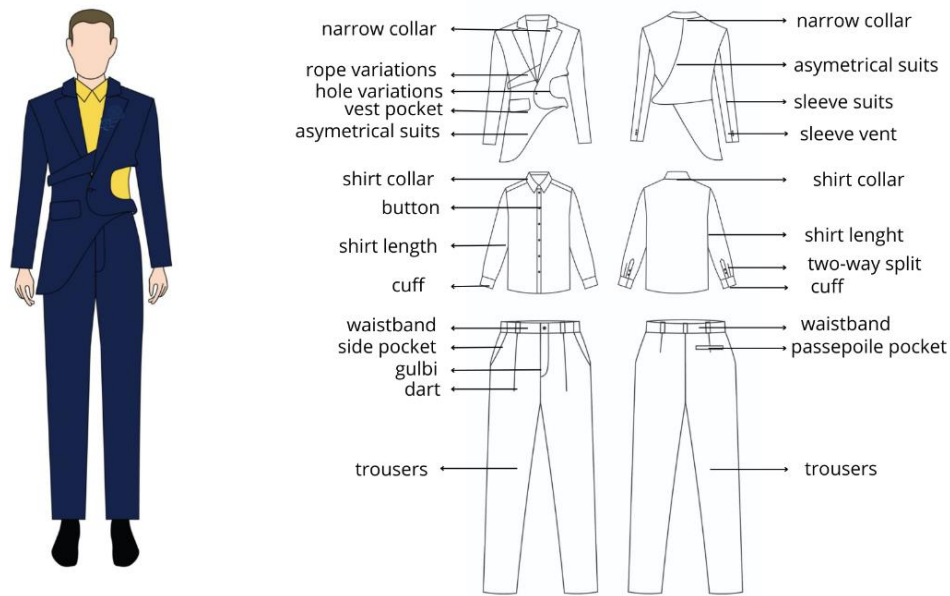


Figure 8. Technical Drawing

In figure 7 and 8 are technical drawings and explanations of the party clothing designs that have been selected and perfected. Technical drawings are used as a reference for designing clothing to minimize errors during clothing production. Technical drawings should give detailed information about the model to the styler [11].

### Deliver

The deliver stage is the final stage in the double diamond model method. According to [6] at this stage all input is collected, the design is selected and approved, the product is finalized, finally evaluating the creation of the fashion design.

At this stage, we carry out analysis and explanation of the results of the finished fashion design from the source of the Asiatic lily flower idea. Asiatic lily flowers as inspiration for making manipulating fabric for party clothing. The women's party wear has an A-line silhouette, with an asymmetrical balance from manipulating asiatic lily flower fabric that has been stylized. The upper body has additional accents of manipulating fabric cording as filler. The part of the skirt that is one with the dress, there is a layered skirt with flowing material that creates a dramatic feminine impression. In men's party wear, namely men's suits with asymmetrical balance seen in the upper body pattern and details of manipulating asiatic lily flower fabric as an accent.

## RESULTS AND DISCUSSION

### Results

#### The Process of Making Women's Party Clothing with the Source of Asiatic Lily Flower Ideas

The Asiatic lily flower is used as an inspiration source for ideas for making women's party wear which is applied to the technique of manipulating fabric as decoration. Making asiatic lily flower manipulating fabric is done by sewing each part of the flower petals. Making asiatic lily flower manipulating fabric starts from making flower petal patterns with varying sizes ranging from 5cm, 10cm, to 15cm. Then, cutting the fabric in the shape of flower petals is continued by sewing each petal section with a sewing machine. The flower petals that have been sewn are then assembled, each flower requires approximately 6 petals depending on the size of the flower to be made. The fabric used in making this manipulating fabric is duchess material. The goal is that the resulting flower petals can stand upright.



Figure 9. Manipulating Fabric Asiatic Lily

Details of manipulating fabric cording are added as decoration. The materials used in making this manipulating fabric cording are setapura silk and tulle. The goal is to make the rope flexible but keep the contents of the rope solid. Making manipulating fabric cording starts from cutting silk and tulle fabric at an angle to the fabric fibers. The size of the fabric used is 4cm wide and the length is as long as the fabric needed. Then sew it like sewing a knotted rope with a stitch width of 0.5cm. The finished rope is then assembled like making macrame in the shape of a rhombus and each corner is pricked with a knot with hand stitches. The finished result is manipulating asiatic lily flower fabric and cording attached to the top of the party dress, plus asiatic lily flower decorations arranged asymmetrically on the manipulating fabric cording on the upper left chest and lower right hip.





Figure 10. Manipulating Fabric Cording

The process of making clothes is custom made. Custom made is clothing made using a tailor or couture system for individuals according to the wearer's size with an exclusive design. The point is that in essence the clothes are not only limited to sketch drawings, to realize it to be a fashion but also to focus on technical designs such as making patterns and sewing the clothes [12]. The process of making party clothes starts from making basic patterns using construction techniques. A construction pattern is a pattern that is made according to a model's body size using a certain system that can be used for all kinds of body shapes [13]. Making basic patterns for women in construction techniques using the Esmod system and then breaking up the patterns according to the design.

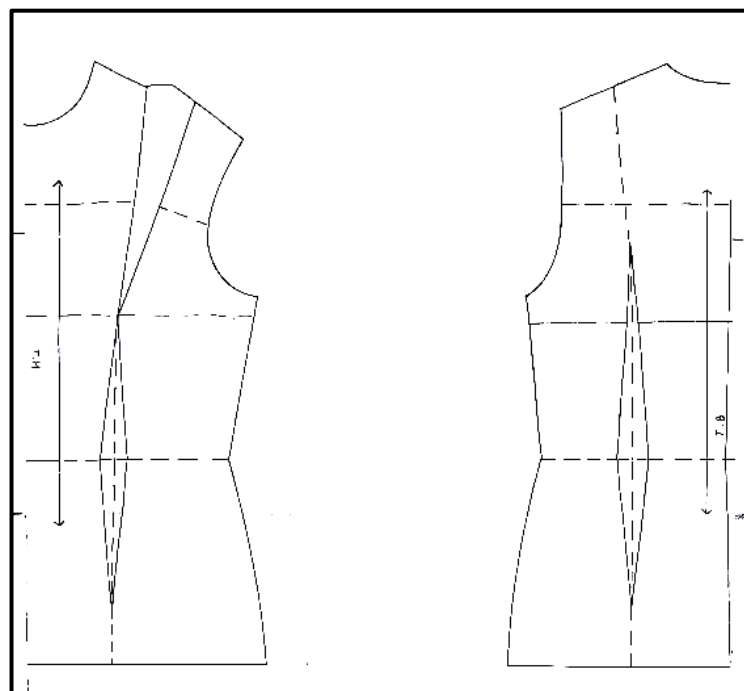


Figure 11. Archetype

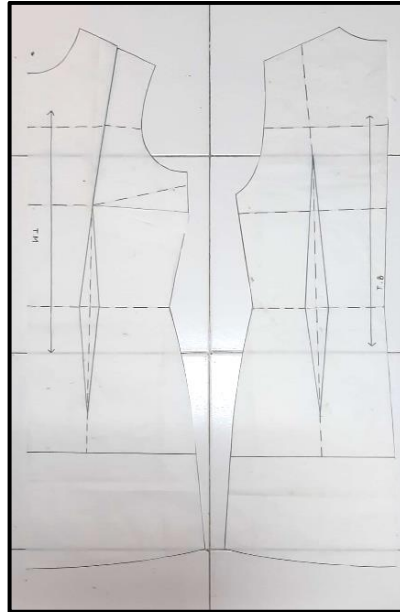


Figure 12. Broken Party Clothing Patterns

In figure 8 is the result of a broken pattern from the basic pattern of a woman in construction techniques using the Esmod system which has been broken into a pattern according to the design. The result is that the pattern is broken by moving the shoulder flaps to the side flaps and then the length of the dress is made 80cm. For the bottom of the skirt, use a  $\frac{1}{4}$  circle draping technique.



Figure 13.  $\frac{1}{4}$  Circle Skirt Draping Pattern

The main materials used in making this women's party dress are setapura silk and tulle. Party clothing that uses high quality fabric can create a luxurious and elegant impression [14]. The setapura silk material chosen is suitable for use for parties with a slender and shiny surface, giving a luxurious and elegant impression to the clothing.



Figure 14. Setapura Silk Fabric

### Process of Making Men's Party Clothing with Ideas for Asiatic Lily Flowers

Men's party fashion using the idea of Asiatic lily flowers expressed in the form of details manipulating three-dimensional flower fabric. Manipulating fabric is made using a sewing technique according to the shape of the flower and leaf pattern of distilled Asiatic lily flowers. The size of the flower pattern is made 10cm and the size of the leaves is made 15cm long with leaf stalks 40cm long. The flowers that have been sewn are then assembled by manipulating the leaves that have been made.



Figure 15. Results of Manipulating Fabric on Men's Party Clothing

Making men's party wear patterns using a tailoring system. The tailoring system is a technique for making clothing from certain materials, applying special sewing techniques, and using full lining layers. The men's party attire consists of a men's jacket, pantaloons and a men's shirt. The materials used in making this men's suit are made from good quality materials such as wool. The process of making a men's suit requires smoothness and tidiness, the use of lining layers, and the cut of the suit are also given great attention. The cut of a good suit should have a natural look that makes the wearer look good by paying attention to the wearer's detailed measurements such as a man with a small, thin body will look good in a narrow suit with little or no shoulder pads, narrow collars, and fitted pant legs [15].



Figure 16. Men's Party Fashion

### Discussion

#### The result is a party outfit with the idea source for the Asiatic Lily flower

The result is the embodiment of men's and women's party wear using the idea of asiatic lilies. Women's party wear with asymmetrical balance, A-line silhouette, displays unique and attractive clothing. Men's party wear with asymmetrical balance and details of manipulating floral fabric on the lapel as the center of attention. This party attire was demonstrated at the 2nd Annual Fashion Show of the Unesa D4 Fashion Design study program.



Figure 17. Party Clothing at the 2<sup>nd</sup> Annual Unesa Fashion Show Fashion Show

Women's party clothing takes the concept of Feminine Dramatic Style. This style gives a luxurious impression with the many detailed applications and decorations. Party attire inspired by the Asiatic lily flower which is applied to manipulating fabric details. Manipulating the resulting flower fabric in three dimensions plus sequin decoration arranged asymmetrically and irregularly really stole the attention. Apart from that, the manipulated fabric cording applied as a filler looks textured to form rhombic spaces with blue sequin knots which gives a unique impression. The combination of manipulating



fabric cording details and Asiatic lily flowers in this party dress complements and perfects each other so that it beautifies and adds aesthetic value to the dress.

The use of setapura silk fabric and tulle is very suitable because the soft and flowing material makes the clothing seem feminine. The choice of yellow and navy blue is also very suitable because the color choice is contrasting and bold in accordance with the theme used, namely Symbiotic Fusion.



Figure 18. The Results Become Women's Party Clothing

Men's party attire with a suit and shirt gives a formal and elegant impression. The manipulating fabric detail of the Asiatic lily flower makes it stand out and becomes the center of interest. The jacket's slim fit cut, asymmetrical balance, and narrow collar really suited the model because of the model's tall, thin body. The chasmere wool material used is also very suitable, there is a slight touch of shine, making this suit look luxurious.



Figure 19. The Results Become Men's Party Clothing

## CONCLUSION

Sources of ideas are very necessary in making clothes. The Asiatic Lily flower used as a source of ideas is a new innovation in making men's and women's party wear. The Asiatic Lily flower, which was applied using a three-dimensional flower-shaped fabric manipulation technique as decoration, as well as a combination of manipulating fabric cording on women's party clothing, succeeded in creating a unique and aesthetic design. Adding a little touch of sequins, this party outfit gives an even more luxurious impression.





The use of the esmod system construction pattern on women's party wear and the tailoring system on men's party wear makes the clothes look right on the model's body, creating an elegant and proportional silhouette. The results of this party outfit are in line with the theme of "symbiotic fusion," with three-dimensional manipulating fabric decorations with Asiatic Lily flowers that emphasize asymmetrical balance.

The combination of manipulating asiatic lily flower fabric and cording was successful as expected. Combining these manipulating fabric decorations produces decorations that are beautiful, unique, and add aesthetic value to clothing. In the process of making manipulating fabric for Asiatic lily flowers, it is best to use a stiff material such as duchess so that the resulting flower petals can stand upright. If you want to use a thin, langsai material, it is best to cover it with tricot fabric first. On the other hand, in the process of making manipulating fabric cording, it is better to use thin and sloping material, and the position of the fabric must be at an angle so that it is easy to turn the rope over.

The results of this research open up opportunities for further development in the field of fashion, especially in the application of fabric manipulation techniques inspired by natural elements. Development prospects could include exploring a wider variety of fabrics and textures, as well as applying Asiatic Lily flower-based designs to other fashion collections, such as casual wear, work wear, or even fashion accessories. Apart from that, developing these results can also expand the use of technology in creating more complex and realistic three-dimensional details, thereby enriching the aesthetic value and functionality of clothing.

For the next stage, this research has the potential to be applied on a larger and more commercial production scale. Testing on different body types and consumer preferences can help refine the design to make it more universal and acceptable to a wider market. In addition, further research can be focused on optimizing production processes, including the efficiency of fabric manipulation techniques and testing materials that are more environmentally friendly. Developing collaboration with the textile and fashion industry can also be a strategic step to implement this innovation on a massive and sustainable basis in the global fashion industry.

## REFERENCES

- [1] A. Robiha Dan W. Urip, "Hemisveric Sebagai Sumber Ide Penciptaan Busana Pesta," *BAJU: Journal Of Fashion And Textile Design Unesa*, Vol. 4, No. 1, Pp. 59-66, 2023.
- [2] Y.-I. Kang, Y. J. Choi, Y. R. Lee, K. H. Seo, J.-N. Suh Dan H.-R. Lee, "Cut Flower Characteristics And Growth Traits Under Salt Stress In Lily Cultivars," *Plants (Basel)*, Vol. 10, No. 7, P. 1435, 2021.
- [3] N. F. A. Wahab, "Using Fabric Manipulation As An Important Aspect Of Zero Waste Fashion Implementing Fashion Sustainability," *International Journal Of Design And Fashion Studies*, Vol. 5, No. 2, Pp. 1-37, 2022.
- [4] A. I. Kurniasari, "Penerapan Teknik Patchwork Pada Pembuatan Busana Pesta Remaja Dengan Sumber Ide Matahari Senja," *Doctoral Dissertation, Universitas NEGERI MAKASSAR*, 2019.
- [5] S. Nafisah Dan S. Marwati, "Designing Party Dress With Wijayakusuma Batik Motif," *ARTISTIC: International Journal Of Creation And Innovation*, Vol. 3, No. 1, Pp. 65-88, 2022.
- [6] Indarti, "Metode Proses Desain Dalam Penciptaan Produk Fashion Dan Tekstil," *BAJU: Journal Of Fashion And Textile Design Unesa*, Vol. 1, No. 2, Pp. 128-137, 2020.



- [7] J. Ledbury, "Design And Product Development In High-Performance Apparel," *In High-Performance Apparel* , Pp. 175-189, 2018.
- [8] Indarti Dan A. S. Harini, "Dayak Tribe Talawang Motif As A Variety Of Bridal Fashion Decoration With Laser Cutting Technique," *TEKNOBUGA: Jurnal Teknologi Busana Dan Boga*, Vol. 11, No. 1, Pp. 15-23, 2023.
- [9] Rofiah, L. Athur Dan R. Suhartini, "Pengembangan Desain Motif Batik Kawung Dengan Teknik Laser Cutting Pada Cardigan," *Jurnal Online Tata Busana*, Vol. 9, No. 2, 2020.
- [10] T. Warbung, N. Soedarso, R. Carina Dan A. Zahra, "Persona In A Form Of Mood Boards As A Part Of The Design Process. In IOP Conference Series: Earth And Environmental Science," *In IOP Conference Series: Earth And Environmental Science*, Vol. 729, No. 1, 2021.
- [11] N. A. Kalebek, G. Özdemir, E. Çoruh, T. Öztürk Dan Atıf/Citation, "Reflection Of Punc Art Trend On Fashion," *Sanat Dergisi*, Vol. 10, No. 36, Pp. 151-164, 2020.
- [12] M. Rizkiah, I. Widiaty Dan B. Mulyanti , "Fashion Pattern Maker Of Software Application Development," *In IOP Conference Series: Materials Science And Engineering*, Vol. 830, No. 4, 2020.
- [13] Ernawati, "Konstruksi Pola Busana," Pp. 1-140, 2021.
- [14] N. P. D. P. Paramita, "Inovasi Busana Pesta Berbahan Tekstil Tradisional Bali," *Style: Journal Of Fashion Design* , Vol. 1, No. 2, Pp. 36-44, 2022.
- [15] Swadesi, P. Zaza Dan F. Nursari, "Potensi Pengembangan Desain Jas Pria Dengan Teknik Pattern Manipulation," *ATRAT: Jurnal Seni Rupa*, Vol. 7, No. 2, Pp. 103-110, 2019.

